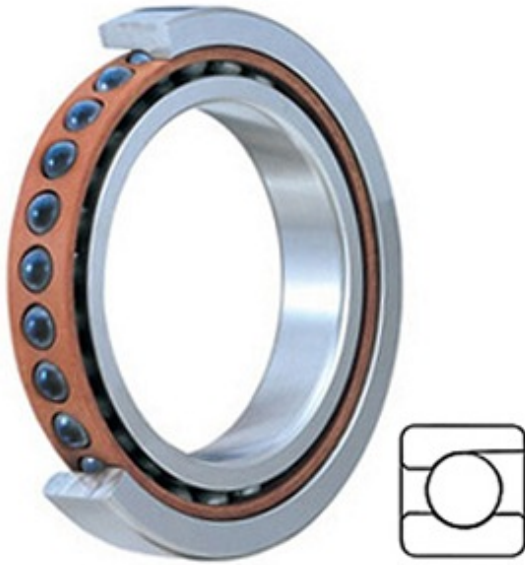




BEARING Material Product LIMITED



3MMC9106WI SUH Bearing 2D drawings and 3D CAD models

1.181 Inch | 30 Millimeter x 2.165 Inch | 55 Millimeter x 0.512 Inch | 13 Millimeter TIMKEN 3MMC9106WI SUH Precision Ball Bearings

Bearing No. 3MMC9106WI SUH

Category	Precision Ball Bearings
Inventory	0.0
Manufacturer Name	TIMKEN
Minimum Buy Quantity	N/A
Weight	0.113
EAN	0087796351448
Product Group	B04270
Enclosure	Open
Precision Class	ABEC 7 ISO P4
Material - Ball	Ceramic
Number of Bearings	1 (Single)
Contact Angle	25 Degree
Preload	Heavy
Raceway Style	1 Rib Outer Ring
Cage Material	Phenolic
Rolling Element	Ball Bearing
Mounting Arrangement	Universal
Flush Ground	Yes
Inch - Metric	Metric
Other Features	Single Row Angular Contact Super High Precision Hybrid Corrosion Resistant Ball
Long Description	30MM Bore; 55MM Outside Diameter; 13MM Width; Open Enclosure;



BEARING Material Product LIMITED

	ABEC 7 ISO P4 Precision; Ceramic Ball Material; 1 (Single) Bearings; 25 Degree Contact Angle; Phenolic Cage Material; 1 Rib Outer Ring R
Category	Precision Ball Bearings
UNSPSC	31171531
Harmonized Tariff Code	8482.10.50.28
Noun	Bearing
Keyword String	Angular Contact Ball
Manufacturer URL	http://www.timken.com
Manufacturer Item Number	3MMC9106WI SUH
Weight / LBS	0.25
D	2.165 Inch 55 Millimeter
B	0.512 Inch 13 Millimeter
d	1.181 Inch 30 Millimeter